



MANORTEQ

Completing the Waterproofing

Fixing Wire

TECHNICAL DATA SHEET

Fixing Wire for the fixing of HydroBar Original and HydroBar Evo to concrete.

Description

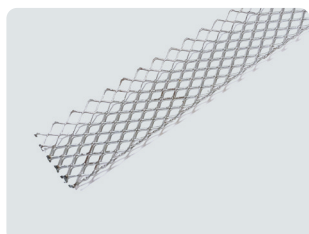
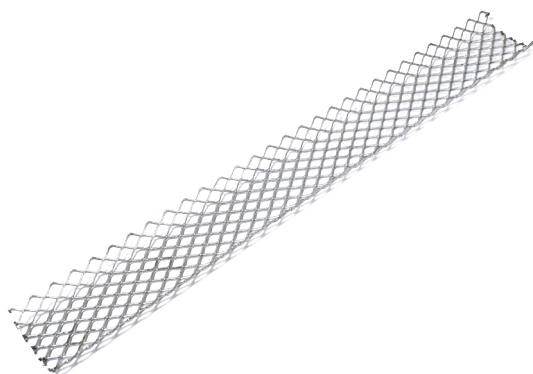
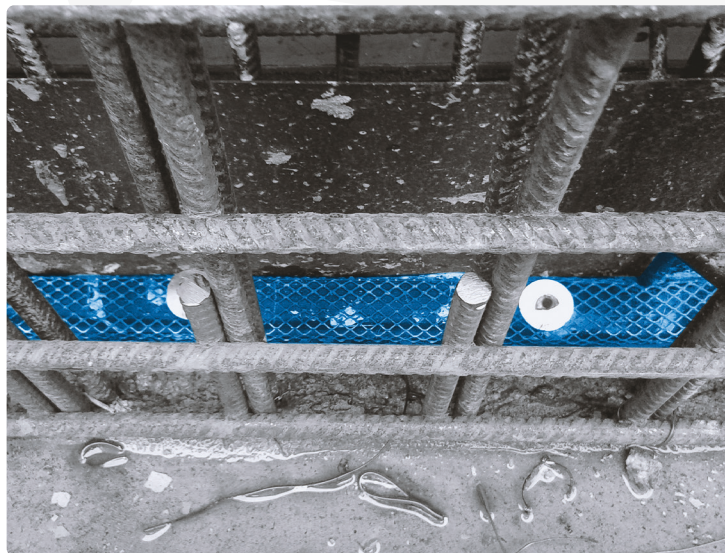
- Expanded metal grid made of galvanized U-shaped steel.

Advantages

- Fixing Wire is specifically designed to securely fix HydroBars.
- It can be nailed or tacked to concrete, over HydroBars, to provide a secure fixing prior to the next pour of concrete.
- Particularly useful in vertical and overhead applications.
- The U-shaped steel mesh is extremely simple to use.

Application

- Place HydroBar Original or HydroBar Evo on a smooth, latent and dust free concrete surface.
- Ensure the Hydrobars do not move around prior to being fixed in place with Fixing Wire.
- Secure Fixing Wire, with nails and washers with a recommended maximum spacing of 250 mm.





MANORTEQ

Completing the Waterproofing

Fixing Wire

TECHNICAL DATA SHEET

Technical Data

Dimensions

Product length

1 metre

Box Size

30 lengths per box

Profile

'U' shaped

Warranty

Manorteq Limited (Company No. 13817118) warrants to the purchaser that the products supplied by it shall be free from material defect. Should any of the products be proven defective, the liability to Manorteq Limited shall be limited to (at the choice of Manorteq Limited) either replacement of the proven defective products ex-factory, or refund of the NETT ex-factory purchase price at the date the proven defective products were supplied. Manorteq Limited will not be liable or responsible, to such an extent as permitted by law, for any consequential or direct damages, compensation, costs, expenses, losses or other liabilities that may occur as a result of the defective products. Manorteq Limited makes no warranty as to the merchantability or fitness for a particular purpose and the terms of this warranty are in lieu of all other warranties expressed or implied by law.

Please note: This Technical Data Sheet is for general guidance only. It does not constitute as a detailed guide for a specific application. Due to the unique circumstances of every site, each installation must be assessed on a project-by-project basis as there may be many variables to consider. Independent professional advice should be sought on each installation. The information contained within this Technical Data Sheet is to the best of Manorteq Limited's knowledge and belief, accurate and reliable of the date indicated. However, no representation, warranty or guarantee is made to its accuracy, reliability or completeness.

