



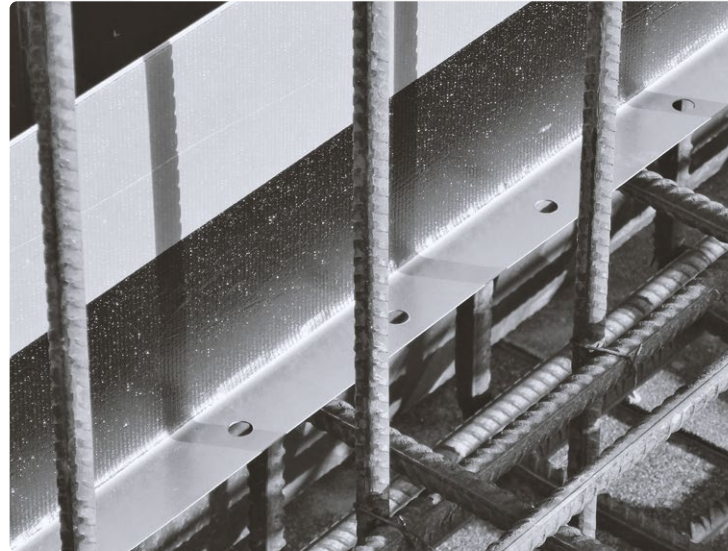
Kicker Joint Metal Plate with Bitumen Layer

Description

- WaterBar Rigid KJ is used on construction joints within reinforced concrete structures.
- The element is made of a galvanized sheet, 165 mm wide, 0.50 mm thick and in standard lengths of 2.50 m.
- The surface of each element is coated both sides with a modified bitumen.
- This special elastic layer is resistant to organic sewage, and therefore the WaterBar Rigid KJ is suitable for applications in environments such as wastewater treatment plants.
- The bituminous layer is protected with foil.

Storage

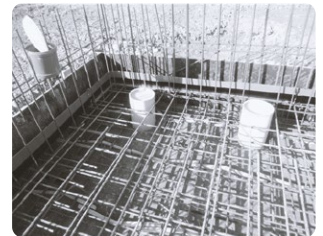
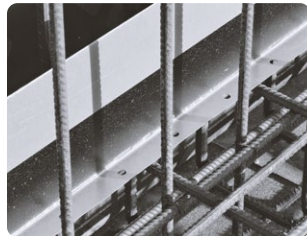
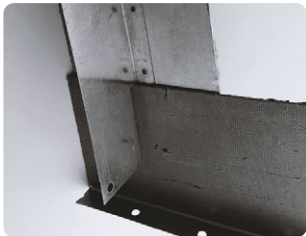
- All products should be stored, in their original sealed packaging, in a dry environment and away from direct heat. Keep covered and away from possible damage or premature contact with water.
- Shelf life is 12 months from date of manufacture.





Installation

- Remove the 'lower' protection foil from the elements (the 'lower' part of the element being the one with the edge for fastening to the reinforcement).
- Place WaterBar Rigid KJ on the reinforcement, where the element is proposed to be installed.
- Fasten the element onto the reinforcement using binding wire. (The best place to start with the installation is typically at a corner – the first element should be bent in half in such cases.)
- At the end, 100 mm of the 'upper' protection foil should be peeled off, to allow the next length of WaterBar Rigid KJ to be joined to it.
- The minimum overlap of each element is 50 mm. Join the elements by firmly pressing them to each other.
IMPORTANT: Ensure that both surfaces in the overlap have fully adhered to each other across the entire width of the elements.
- Use a clamp to secure the joint of the elements. - The 'upper' protection foil should then be stuck back over the joints.
- Subsequent lengths should be installed in a similar fashion.
- The 'upper' protection foil should be removed just prior to concreting over the upper part of the metal sheet. Removing it too early may result in having a reduction in the effectiveness of the adhesive layer.
- T-shapes and other connections between the elements must be secured with a clamp.
- The lower part of the metal sheet must be submerged in concrete a minimum of 30 mm and a maximum of 80 mm after the first concrete pour.





MANORTEQ

Completing the Waterproofing

WaterBar Rigid KJ

TECHNICAL DATA SHEET

Warranty

Manorteq Limited (Company No. 13817118) warrants to the purchaser that the products supplied by it shall be free from material defect. Should any of the products be proven defective, the liability to Manorteq Limited shall be limited to (at the choice of Manorteq Limited) either replacement of the proven defective products ex-factory, or refund of the NETT ex-factory purchase price at the date the proven defective products were supplied. Manorteq Limited will not be liable or responsible, to such an extent as permitted by law, for any consequential or direct damages, compensation, costs, expenses, losses or other liabilities that may occur as a result of the defective products. Manorteq Limited makes no warranty as to the merchantability or fitness for a particular purpose and the terms of this warranty are in lieu of all other warranties expressed or implied by law.

Please note: This Technical Data Sheet is for general guidance only. It does not constitute as a detailed guide for a specific application. Due to the unique circumstances of every site, each installation must be assessed on a project-by-project basis as there may be many variables to consider. Independent professional advice should be sought on each installation. The information contained within this Technical Data Sheet is to the best of Manorteq Limited's knowledge and belief, accurate and reliable of the date indicated. However, no representation, warranty or guarantee is made to its accuracy, reliability or completeness.

